

WhaZoodle!
SPEAKER SIDEKICK

SPOTLIGHT



SOCIAL & EMOTIONAL

AGES 10+

Health Crises!

MODES TO CHOOSE



Explore

Curated podcasts, short stories, fun facts, and sing-alongs that explore the bundle theme



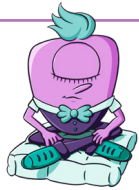
Recess

Dancing, drawing, crafts, and more to keep the listener moving



Relax

Guided meditations or stretches, nature and sleep sounds to help wind down



Listening Library

playaway
PRODUCTS

WARNING:
CHOKING HAZARD - Small parts.
Not for children under 3 years.

WHO HQ & Design is a registered trademark of Penguin Random House LLC.
© Penguin Random House LLC. All rights reserved. • Listening Library, an imprint of the Penguin Random House Audio Publishing Group. Full credits & copyright information can be found by scanning the QR code.

© 2026 Playaway Products. All rights reserved. Designed in Ohio. Made in China.

CAUTION - ELECTRONICALLY OPERATED PRODUCT
The WhaZoodle format is recommended for children ages 3+. Adult supervision recommended. As with all electric products, precautions should be observed during handling and use to prevent electric shock.

SOCIAL & EMOTIONAL

Health Crises!

With this WhaZoodle, kids will learn about the Plague and the AIDS crisis through Who HQ stories from Penguin Random House Audio!

EXPLORE MODE INCLUDES:

- What Was the Plague? by Roberta Edwards
- What Is the AIDS Crisis? by Nico Medina

SCAN FOR ALL TRACKS



APPROX. RUN TIME | 3 hours

WZ000316



9 798331 715250

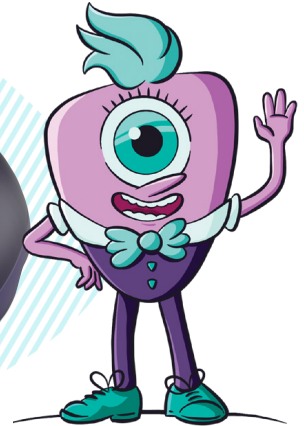
Health Crises!

SOCIAL & EMOTIONAL

AGES 10+

Embark on an epic adventure

SPOTLIGHT



WhaZoodle!

SPEAKER SIDEKICK